



---

**October 10-13, 2022**

Gaylord Palms, Orlando, FL

---

# Head-to-Head: Process VS Discrete

Decrease Complexities,  
Deliver Results.

# Head-to-Head: Process versus Discrete

## Which team should you be on?



[Are you ready for some Football](#)



# Our Starting Lineup



**TEAM PROCESS**

Traci Didonna, Alithya  
Principal Program Manager



**TEAM DISCRETE**

Ginger Griffith, Alithya  
Presales, Solution Consultant



**OFFICIAL/REFEREE**

April Waydula, ChemTreat  
Business Systems Analyst



**HEAD of our CHEERING SQUAD**

Charlene Bussat, Alithya  
Customer Marketing Manager

Being the tech savvy, social media gurus that we are, we posted the following:



Alithya Process vs Discrete 

@processdiscrete

What do you think of when you hear BOM or Formula?  
Process or Discrete?  
Comment here or Tweet at us !

12:00 PM · Aug 1, 2022 · Twitter Web App







Let's see  
some of our  
responses:





**Albert "Big AL" Einstein** is at the Kaiser Wilhelm Institute for Physics with Adolf Harnack.  
Yesterday at 4:45am · 🌐

I know a lot about Formulas. Here is a Formula that I created. Want to see more?


$$E = mc^2$$

👍🤔🤯 100k

21 Comments 10 Shares

🤯 Wow

💬 Comment

➦ Share

View more 16 Comments



Write a comment...



Here's a Facebook post from our Old friend "Big AL":

# Here's what sports announcer Maria Taylor says about the difference between Process and Discrete:



## Discrete

- ✓ BOM's
- ✓ Things you can TAKE APART
- ✓ Things
- ✓ Like Bicycles

## Process

- ✓ Formulas
- ✓ Things that you BLEND TOGETHER
- ✓ Stuff
- ✓ Like **Cake**





The Real Miss Piggy

@MOI



Cake, did someone say Cake???

[#Moilovescake](#) [#Kermitissohot](#)

2:00 PM · Aug 5, 2022 · Twitter Web App

**531** Retweets

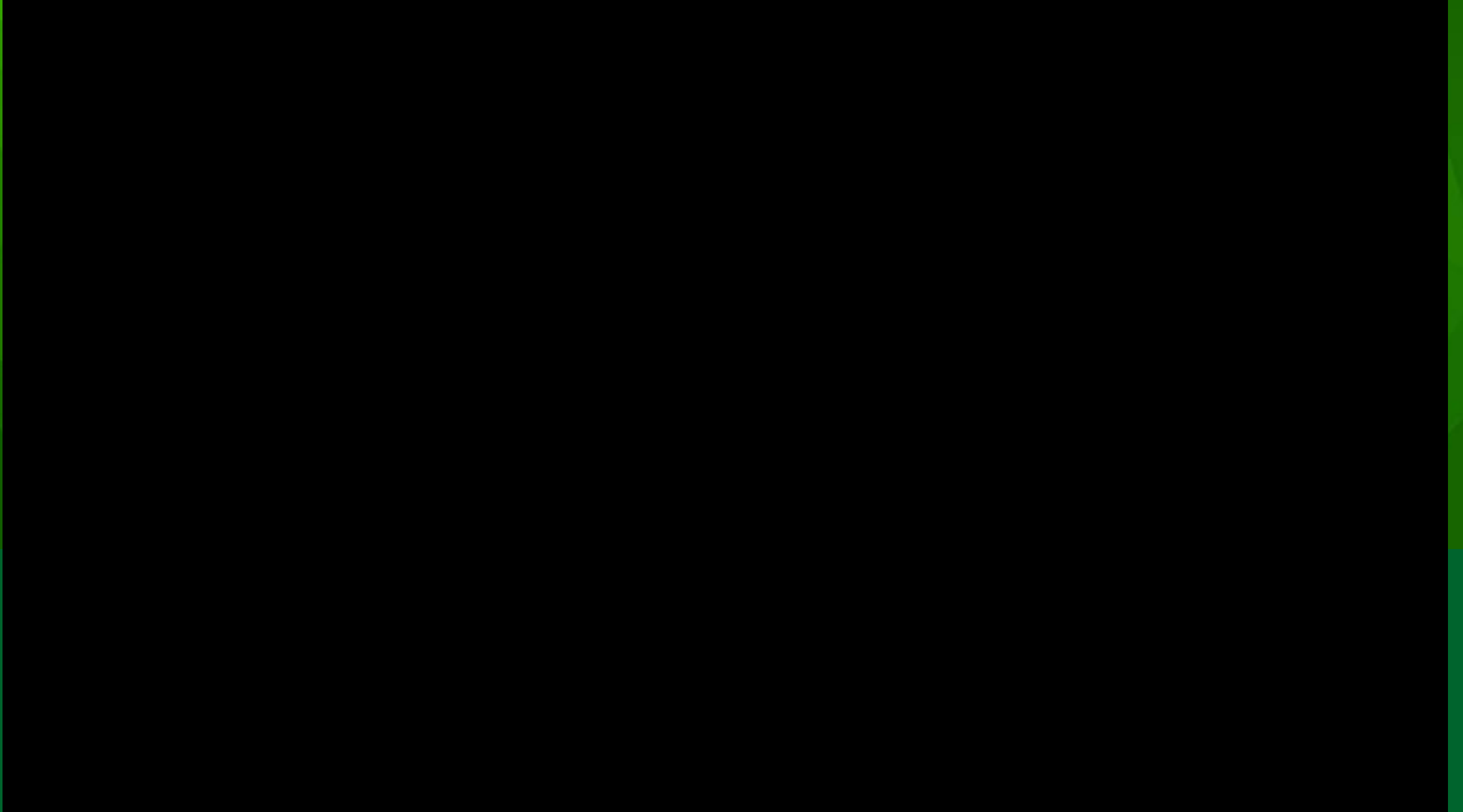
**377** Quote Tweets

**7.2K** Likes



**We just received a new responsive tweet:**

# TV Timeout for Commercial: Progressive Football Stadium Parking Lot



# Coin Toss:

TEAM  
PROCESS



What IS the  
difference  
between  
Process and  
Discrete?





**PROCESS**

**DISCRETE**

00:00

00

00

**DOWN**

**TO GO**

**BALL ON**

**QTR.**

1

00

00

1

# Q1: 1<sup>st</sup> play (business issue) of the game:

I need to be able to manufacture one item with a single order.

# Manufacture One Item on One Order



PROCESS



DISCRETE

Dynamics 365 Finance and Operations Product information management > Products > Released products

FORMULA OPTIONS

MAINTAIN CONFIGURATION PRODUCT CHANGE

200003 Form V1 : 200003 Formula Version 1

Formula header

Formula: 200003 Form... Name: 200003 Formula Version 1 Site: 1 Item group: 30

Formula lines

Ingredient type	Item number	Warehouse	Resource consu...	Quantity	Per series	Unit	Percent controll...	Percent
None	300001	1M	<input type="checkbox"/>	100.0000	1,000.00	lb	<input type="checkbox"/>	0.00
None	300002	1M	<input type="checkbox"/>	100.0000	1,000.00	lb	<input type="checkbox"/>	0.00
None	300004	1M	<input type="checkbox"/>	100.0000	1,000.00	lb	<input type="checkbox"/>	0.00
None	300005	1M	<input type="checkbox"/>	50.0000	1,000.00	lb	<input type="checkbox"/>	0.00
None	300006	1M	<input type="checkbox"/>	20.0000	1,000.00	lb	<input type="checkbox"/>	0.00

**TIE**

Dynamics 365 Finance and Operations Product information management > Products > Released products

Sleeve Assembly Rev 2

Name: Sleeve Assembly Rev 2 Site: 1 Item group: 10

Bill of materials lines

Item number	Configuration	Size	Color	Warehouse	Resource consu...	Quantity	Per series	Unit
200046Rev2					<input type="checkbox"/>	1.0000	1	Each
200050					<input type="checkbox"/>	2.0000	1	Each
200051					<input type="checkbox"/>	2.0000	1	Each
200053					<input type="checkbox"/>	1.0000	1	Each
200054					<input type="checkbox"/>	1.0000	1	Each



**PROCESS**

**DISCRETE**

00:00

7

7



**DOWN**

**TO GO**

**BALL ON**

**QTR.**

1

00

00

1

# Q1: 2<sup>nd</sup> play (business issue) of the game:

I need to be able to manufacture MORE THAN one item with a single order.

# Manufacture More Than 1 Item on 1 Order



PROCESS

DISCRETE



The screenshot displays the 'Co-products' configuration page in Dynamics 365. The main window shows a table with columns for 'Item number', 'Formula', and 'Name'. Below this, there are sections for 'Inventory Dimension' and 'Formula lines'. A secondary window in the foreground shows a detailed view of a 'Co-product' with a table for 'Production type' and 'Configuration'.

Item number	Formula	Name
200003	200003 Form V1	200003 Formula Vers

Item number	Production type	Configuration	Size	Color
300005	Co-product			
BP-UsedBones	By-product			

Ingredient type	Item number	Configuration	Size	Color	Warehouse	Resource co
None	300001				1M	

**PROCESS**



PROCESS

14

DOWN

1

00:00

TO GO

00

DISCRETE

7

BALL ON

00

QTR.

1

# Q1: 3<sup>rd</sup> play (business issue) of the game:

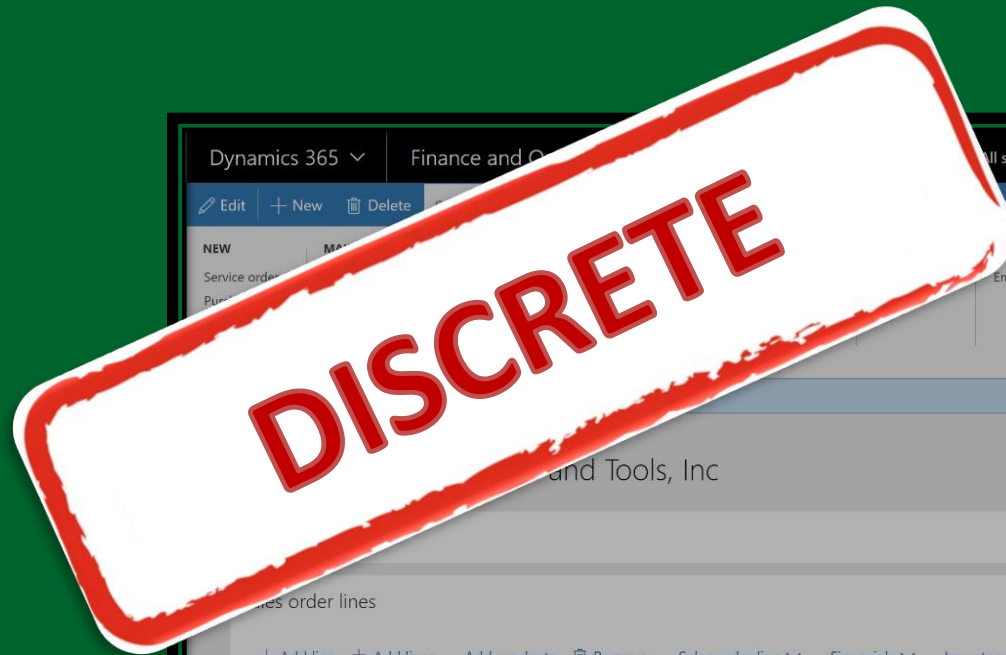
I need to be able to configure the item that I manufacture.

# Configure a Manufactured Item



PROCESS

DISCRETE



Dynamics 365 Finance and Operations

Configure selected item

400001 Nail Gun Assembly Configuration model

Price and ship date 716.58 (USD)

Configure selected item

Load template View price breakdown

400001

Show only feasible No

Region NA

Kit Type Custom

Extra Battery Yes

Battery Count 3

Add Cleaner Yes

Add Glasses Yes

Next

T...	Variant number	Item number	Product name	Sales category
✓	VAN0000029	400001	Nail Gun Assembly / Nail Gun A...	

PROCESS

14

DOWN

1

00:00

TO GO

00

DISCRETE

14

BALL ON

00

QTR.

1



# Q1: 4<sup>th</sup> play (business issue) of the game:

I need to be able to produce the same product in different sites.

# Multi-Site Production



PROCESS



DISCRETE

Dynamics 365 Finance and Operations

Product information management > Products > Released products

FORMULA VERSION FORMULAS OPTIONS

MAINTAIN FORMULA VERSION

Co-products Activate  
Approve Calculation

Filter

200003  
200003 Formula Version 1  
200003 Form V1

FORMULA VERSIONS :: 200003 : BULKCHICKENSTOCKCOPR

200003 : 200003 Formula Version 1

Formula version

IDENTIFICATION  
Formula: 200003 Form V1  
Name: 200003 Formula Version 1

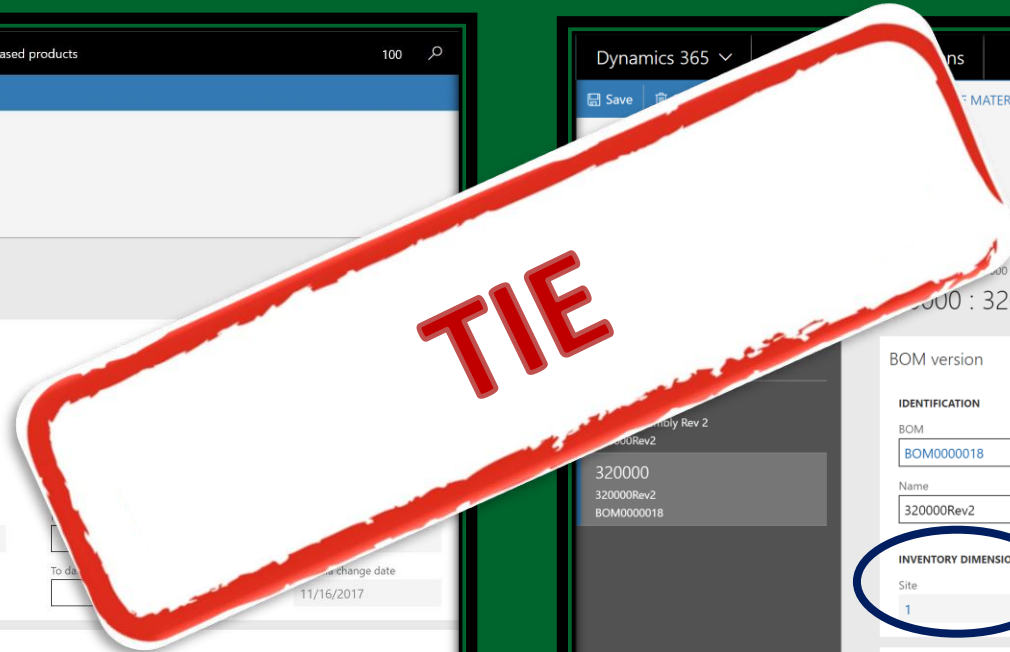
PRODUCT REFERENCE  
Item number: 200003  
Bulk item: [dropdown]  
Product name: Bulk Chicken Stock CoProduct F...

INVENTORY DIMENSIONS  
Site: 1

Formula details

Formula lines

Ingredient type	Item number	Configuration	Size	Color	Warehouse
None	300001	[dropdown]			1M



Dynamics 365 Finance and Operations

Product information management > Products > Released products

MATERIALS OPTIONS

BOM version

IDENTIFICATION  
BOM: BOM0000018  
Name: 320000Rev2

PRODUCT REFERENCE  
Item number: 320000  
Product name: Sleeve Assembly (Assembled in ...)

INVENTORY DIMENSIONS  
Site: 1

VALIDITY  
From qty: 1.00

Bill of materials lines

Item number	Configuration	Size	Color	Warehouse
200046				
200050				

PROCESS

DISCRETE

00:00

21

21



DOWN

TO GO

BALL ON

QTR.

1

00

00

1

# Q2: 5<sup>th</sup> play (business issue) of the game:

I need to be able to make a product that has a batch/lot number.

# Batch/Lot Number



PROCESS



DISCRETE

**TIE**

Item	Product	Formula	BatchDate
400001	Chicken Soup- 16 Oz	ChickenSoup16Oz	Item
400002	Chicken Soup- 12 Oz	ChickenSoup12Oz	Item
400003	CHKN LEGS PROCESSED FRESH ...	CHKNLEGSPROCESSED...	Item
400004	Chicken Breasts Tray	ChickenBreastsTray	Item
400005	Chicken Soup - 32 Oz	ChickenSoup32Oz	Item

Search name	Site	Warehouse	Batch number	Location
ChickenSoup16Oz	1	1M	161027-GLJ0000003	
ChickenSoup16Oz	1	1M	TD.022417.LOTS	
ChickenSoup16Oz	1	1M	TD.022417.LOTS	
ChickenSoup16Oz	1	1M	TD.022417.LOTS	Bay
ChickenSoup16Oz	1	1M	TD.022417.LOTS	Baydo
ChickenSoup16Oz	1	1M	TD.022417.LOTS	Baydo

Item	Product	Batch number group	Production type
	Product		BOM
	Product		BOM
	Product	AutoLot	BOM
	Product		BOM

Search name	Site	Warehouse	Batch number	Physical inventory	Physical reserved
Ruggedized Laser Pro	1	11	140127-000003		
Ruggedized Laser Pro	1	13	181009-000031	5.00	
Ruggedized Laser Pro	1	13	181009-000032	10.00	



**PROCESS**

**DISCRETE**

00:00

28

28



**DOWN**

**TO GO**

**BALL ON**

**QTR.**

1

00

00

2

# Q2: 6<sup>th</sup> play (business issue) of the game:

I want to activate Just In Time manufacturing.

# Just In Time Manufacturing



PROCESS



DISCRETE

**DISCRETE**

Finance and Operations    Production control > Kanban > Kanban schedule board    100

### Kanban schedule board

Work cell: WCAssm    View from: 7/25/2017    Periods: 5    Unplanned jobs: 3

Activity name	Card number	Kanban	Product number	Due date/time	8:00 AM	9:00 AM	10:00 AM	11:00 AM	12:00 PM	1:00 PM	2:00 PM	3:00 PM	4:00 PM
Tuesday 7/25/2017 - 0:00:00 / 9:00:00													
Wednesday 7/26/2017 - 0:00:00 / 9:00:00													
Thursday 7/27/2017 - 0:00:00 / 9:00:00													
Friday 7/28/2017 - 2:30:00 / 9:00:00													
WCAssm	CNU0000005	KNB0000005	320002L	7/31/2017 12:00:00 a									
Monday 7/31/2017 - 0:00:00 / 9:00:00													

**PROCESS**

**DISCRETE**

00:00

28

35

**DOWN**

**TO GO**

**BALL ON**

**QTR.**

1

00

00

2

# A lot of activity on social media:



A screenshot of a Facebook post by Markiplier. The post is titled "KANBAN – Wait, isn't KANBAN the hottest new Video game?" and includes three hashtags: #FortnightLivesForever, #AtarilsFortheOldPeople, and #JustInTimeMeansAllOfTheTime. The post has 3223 likes and 481 shares. The interface shows the user's profile picture, name, and timestamp, followed by the text of the post and engagement metrics. At the bottom, there is a comment input field with a camera and emoji icon.

 **Markiplier** Yesterday at 9:01 am · 🌐

KANBAN – Wait, isn't KANBAN the hottest new Video game?  
#FortnightLivesForever #AtarilsFortheOldPeople  
#JustInTimeMeansAllOfTheTime

[Like](#) · [Comment](#) · [Share](#)

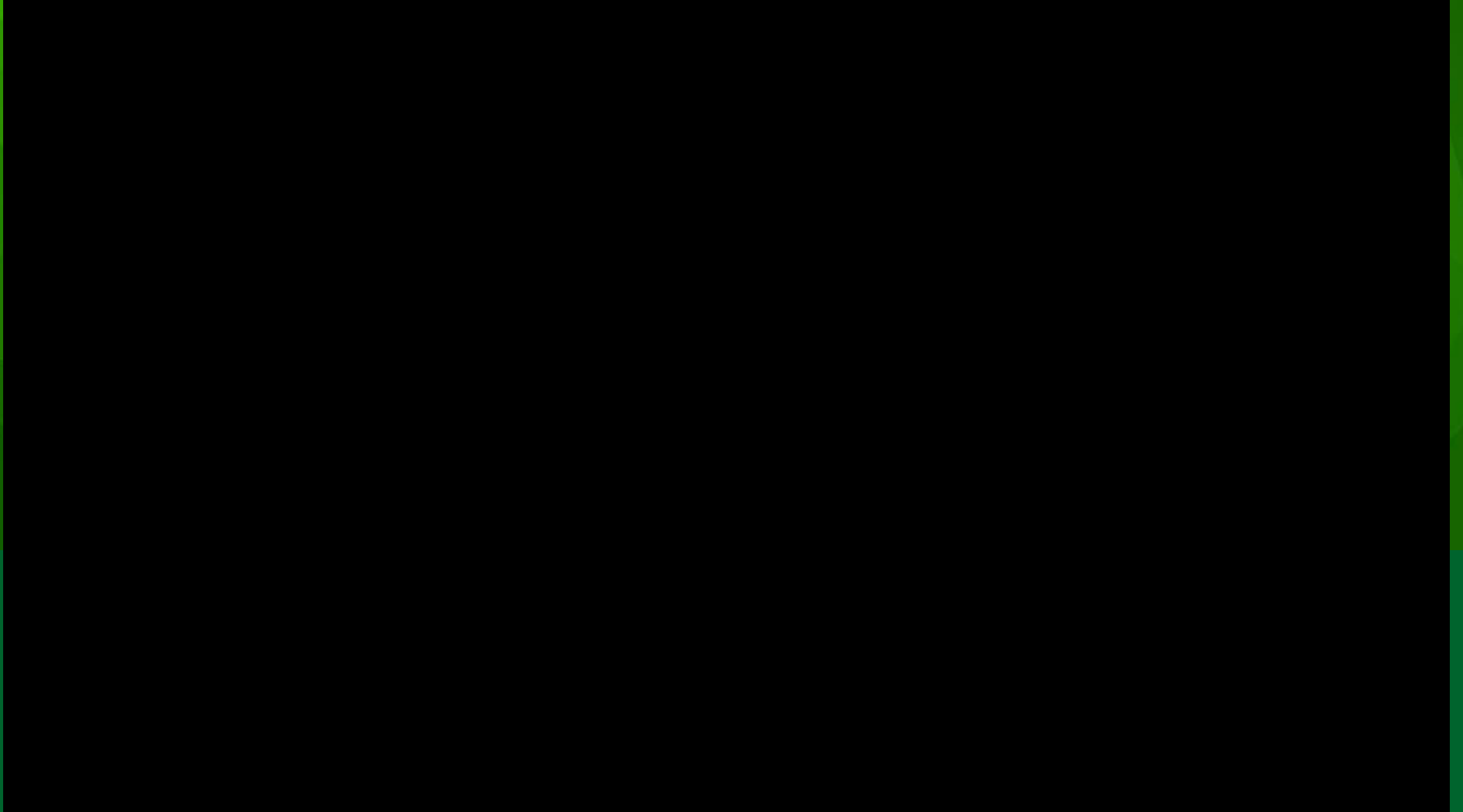
 3223 people like this.

 481 shares

 Write a comment ...  



# TV Timeout for Commercial: Progressive Football Shopping Snacks



# Q2: 7<sup>th</sup> play (business issue) of the game:

I need a controlled process to manage my engineering changes.

# Engineering Change Manufacturing



PROCESS



DISCRETE

Finance and Operations Preview

Search for a page

DEM? ? ? ? ?

Manage costs

Product owner	Production type
Eng Global	BOM

**TIE**

Finance and Operations Preview

Search for a page

Released product details

My view \* v

Filter

Item num...	Product name	Product dimension groups	Product lifecycle	Engineering product ca...	Product owner	Production type
FG100	FG100	Version		Components	Eng Global	BOM
FG2000	FG2000	V2		BOM	Eng Global	BOM
FG800	FG800	V2	Operational	Comp1	Eng Global	Formula
FG900	FG900	Version		Components	Eng Global	BOM

PROCESS

DISCRETE

00:00

35

42

DOWN

TO GO

BALL ON

QTR.

1

00

00

2

# Q2: 8<sup>th</sup> play (business issue) of the game:

I need to sell products that have slightly different weights.



# Products have Variable Weights



PROCESS

DISCRETE



400004 : Chicken Breasts Tray

General

IDENTIFICATION

Item number: 400004

Product type: Item

Product subtype: 400004

Product: Product

FURTHER IDENTIFICATION

Product name: ChickenBreastsTray

Search name: ChickenBreastsTray

Description: Description

ADMINISTRATION

Storage dimension group: SWL

Tracking dimension group: Batch

Item model group: STDFEFO

Reservation hierarchy: Reservation hierarchy

Purchase

Promote

Deliver

Sell

Foreign trade

Manage inventory

WEIGHT MEASUREMENTS

Net weight: 0.00

Gross weight: 0.00

Ware weight: 0.00

Gross weight: 0.00

Gross width: 0.00

Gross height: 0.00

Volume: 0.00

TRANSFER ORDERS

Overdelivery: 0.00

Underdelivery: 0.00

INVENTORY

Counting group: Counting group

Unit: lb

SHIPPING AND RECEIVING

Arrival handling time: 00:00

Sort code: 0

Packing quantity: 0.00

POTENCY

Base attribute: Temperature

target: 42.000000

Record the attribute value: Record the attribute value

Receipt entry: Receipt entry

ITEM DATA

Shelf advice period in days: Shelf advice period in days

Shelf life period in days: 7

Best before period in days: Best before period in days

Batch merge date calculation: Manual

YIELD

Yield percent: 100.00

CATCH WEIGHT

Catch weight item: Yes

C.W. unit: Each

Nominal quantity: 3.0000000000

Minimum quantity: 2.00

Maximum quantity: 4.00

PRODUCT COMPLIANCE

Regulated product: No

Restricted product: No

PROCESS

**PROCESS**

**DISCRETE**

00:00

42

42



**DOWN**

**TO GO**

**BALL ON**

**QTR.**

1

00

00

2







TV Timeout for Commercial: [Chickens R Us](#)

## CATCH WEIGHT

If you need to operate with multiple weights in your Poultry industry, get D365, formulas and catch weight processing to manage dual units of measure and make your life much easier !!!



# Q3: 9<sup>th</sup> play (business issue) of the game:

The expiration of my manufactured finished good depends on the expiration of my raw materials or WIP material.

# Expiration is Inherited



PROCESS



DISCRETE

**PROCESS**

Dynamics 365 Finance and Operations Product information management > Products > Released products

Save + New Delete FORMULA OPTIONS

MAINTAIN CONFIGURATION PRODUCT CHANGE

Approve formula Check Configuration rules Create case Associate with case Designer Copy Configuration rules All cases Add to case log

FORMULAS = 400006 - CHICKEN SOUP 64 OZ

400006 : Chicken Soup 64 Oz

Formula lines

Ingredient type	Item number	Configuration	Size	Color	Ware
None	200002				1M
None	100002				1M
None	300003				1M
None	100008				1M

Line details

General Setup Step consumption Dimension

Quantity: 400.0000 Unit: gal Consumption is: Variable Constant scrap: Per series: 800 Formula: Standard Flushing principle: ROUNDRING: Rounding-up: No Multiples: LOT INHERITANCE: Inherit shelf life dates to end item: Yes Inherit shelf life dates to co-products: No Inherit batch attributes to end item: No Inherit batch attributes to co-products: No



**PROCESS**

**DISCRETE**

00:00

49

42

**DOWN**

**TO GO**

**BALL ON**

**QTR.**

3

00

00

3

# Q3: 10<sup>th</sup> play (business issue) of the game:

I need to adjust some of my raw material quantities based on the potency of one of my items.

# Potency Dictates Raw Materials



PROCESS

DISCRETE



Finance and Operations Preview | Product information management > Products > Released products

Save + New Delete Options

Product specific | RM210 : WINEYEAST

Attribute code: Table | Attribute relation: Concentration

Values:

Tolerance action: Minimum | Target: Potency base attribute

**PROCESS**

**POTENCY**

Base attribute

Concentration

Target: 25.000000

Record the attribute value

Receipt entry

Formula lines

+ New Delete Edit Where-used Vers... Display dimensions Product change

Ingredient type	Item number	Warehouse	Quantity	Per series	Unit	Active quantity	It...	Product name
Active	RM210	24	30.0000	100.00	lb	7.5000	📦	Wine Yeast
Compensating	RM220	24	10.0000	100.00	lb		📦	Pinot Noir Grapes
Filler	RM230	24	40.0000	100.00	lb		📦	Distilled Water
None	RM240	24	20.0000	100.00	lb		📦	Granulated Sugar

We just  
received  
another  
tweet:



Name   
@TroyAikman



Drew Brees has the most passing yards in NFL history!  
He also has 4 kids.

Does that makes him POTENT and very IM-POTENT?

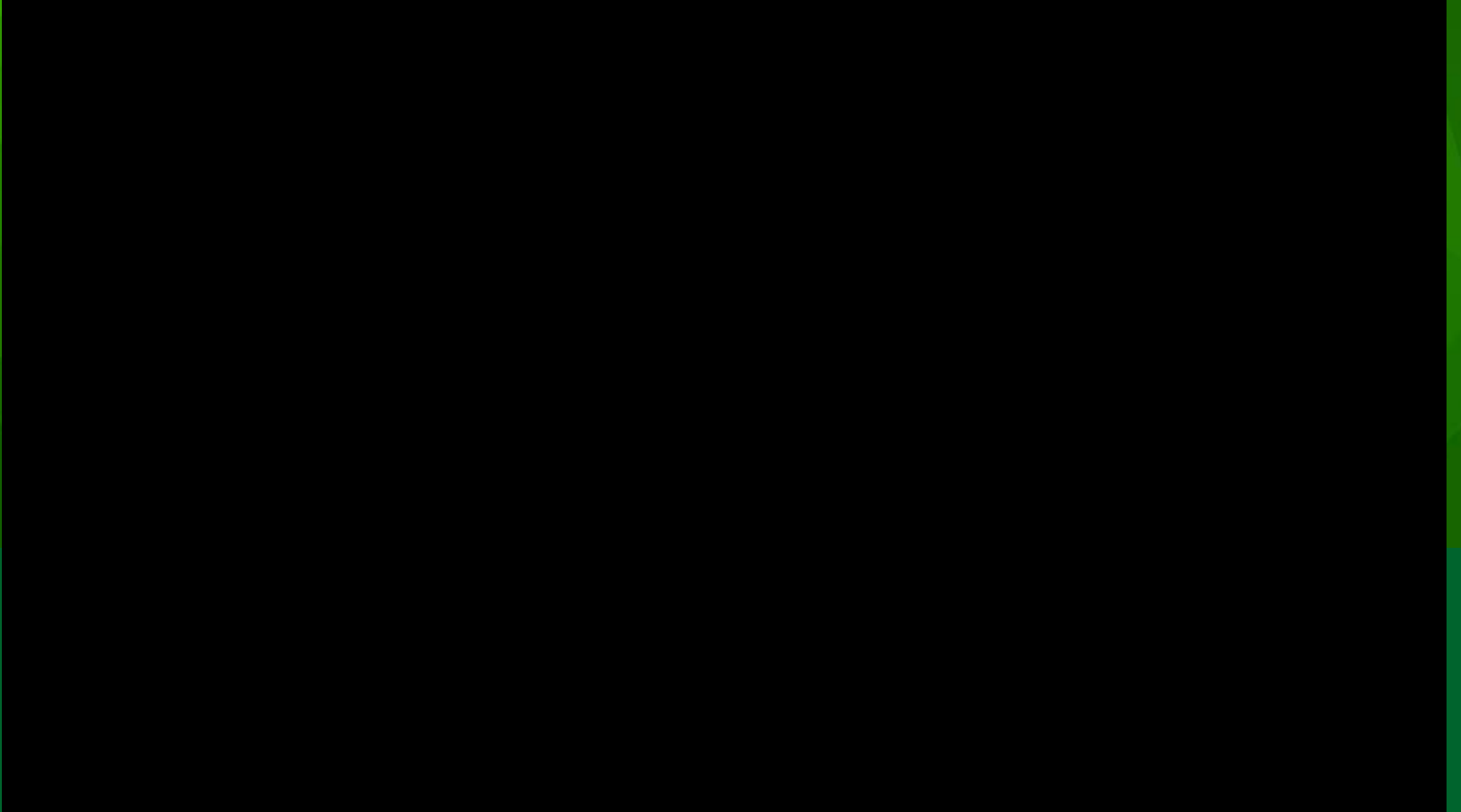
[#PotentPassing](#)

 This fact is disputed

12:00 PM · Jun 1, 2022

87 Retweets   18 Quote Tweets   1K Likes

# TV Timeout for Commercial: Progressive HASHTAGS



PROCESS

DISCRETE

00:00

56

42

DOWN

TO GO

BALL ON

QTR.

1

00

00

3

# Q3: 11<sup>th</sup> play (business issue) of the game:

I need to schedule the resources required to make my product.



# Schedule Resources for Production

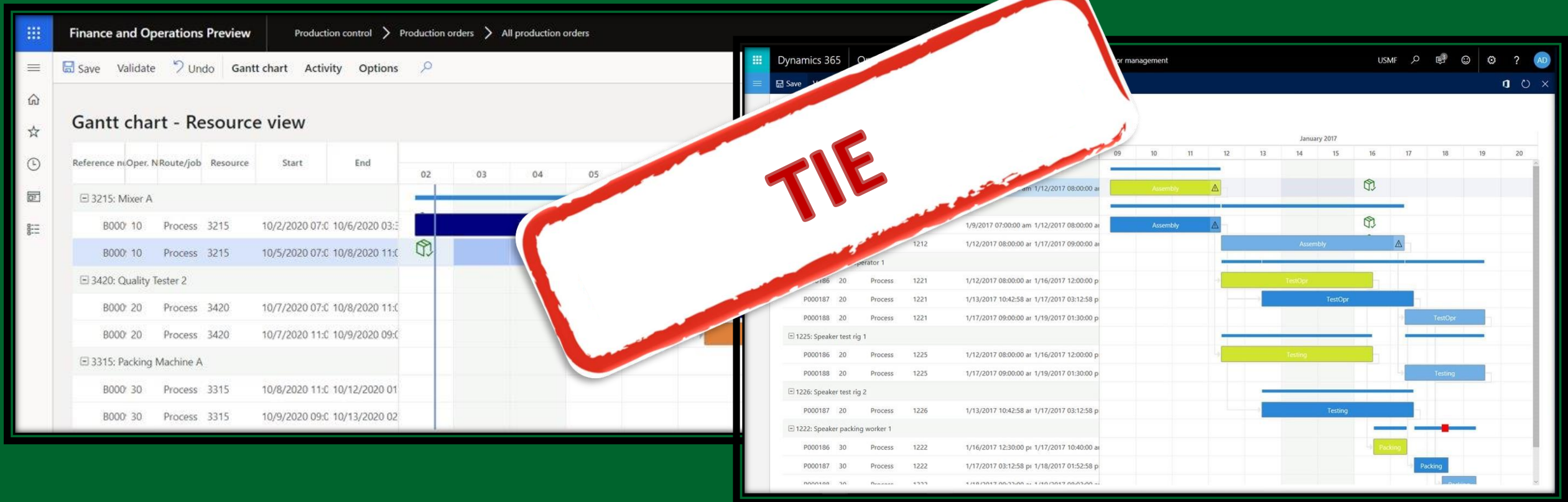


PROCESS



DISCRETE

**TIE**



PROCESS

DISCRETE

00:00

63

49



DOWN

TO GO

BALL ON

QTR.

1

00

00

3

# Q3: 12<sup>th</sup> play (business issue) of the game:

I want to create a new product and track time and expenses in a project that's tracking that new product's activities.

# Manufacturing Project Tracking



PROCESS

DISCRETE



A screenshot of the Dynamics 365 Finance and Operations interface. The top navigation bar shows 'Dynamics 365', 'Finance and Operations', and 'Project management and accounting &gt; Projects &gt; All projects'. The main area is titled 'New Tablet Development for Forest Wholesale'. A 'NEW' dropdown menu is open, showing options like 'Item task', 'Sales order', 'Purchase order', etc. A large red stamp with the word 'DISCRETE' is overlaid on the right side of the screenshot. The interface includes sections for 'PROJECT', 'CUSTOMER', and 'INTEGRATION' with various data fields and dates.

**PROCESS**

**DISCRETE**

00:00

63

56

**DOWN**

**TO GO**

**BALL ON**

**QTR.**

1

00

00

3

# Q4: 13<sup>th</sup> play (business issue) of the game:

We don't want to maintain inventory for our intermediate items.



# Phantom Items



PROCESS



DISCRETE

Dynamics 365 Finance and Operations Inventory management

FORMULA OPTIONS

MAINTAIN: Approve formula Designer, Check Copy

CONFIGURATION: Configuration rules

PRODUCT CHANGE: Create case All cases, Associate with case Add to case log

FORMULAS :: FOR-7701 : BLUE PAINT PRODUCTION

FOR-7701 : Blue Paint Production

None	M7702	Blue Pigment
None	M7703	Additive
None	LA7701	Paint Pail Label - Blue
None	PK7701	5 Gallon Pail

Line details

General Setup Step consumption Dimension Work instructions

IDENTIFICATION

Configuration group

Item number: M7702

Position

SUBCONTRACTOR

Vendor account

**FORMULA**

Line type

- Item
- Item
- Phantom
- Pegged supply
- Vendor
- Subroute



Dynamics 365 Product information management Products Released products

SHARE: Get a link, Create alert rule, Manage my alerts

Product name	Configuration	Size	Color	Warehouse	Resource consu...
Sleeve Assembly (Assembled in ...)					<input type="checkbox"/>
320001 Frame					<input type="checkbox"/>
320002 Combustion Chamber Assembly...					<input type="checkbox"/>
320003 Housing Assembly					<input type="checkbox"/>

Line details

General Setup Step consumption Dimension

IDENTIFICATION

Configuration group

Item number: 320000

Position

**SUBCONTRACTOR**

- Item
- Phantom
- Pegged supply
- Vendor
- Item

Calculation: Yes

Sub-BOM or formula

Subroute

PROJECT: Set subproduction to Consumed: No

VALID: From

OPERATION: Oper. No., End, No



**PROCESS**

**DISCRETE**

00:00

70

63

**DOWN**

**TO GO**

**BALL ON**

**QTR.**

1

00

00

4

# Q4: 14<sup>th</sup> play (business issue) of the game:

In a recall situation, I need to know exactly which customers received which manufactured product.

# Traceability



PROCESS



DISCRETE

Dynamics 365 Finance and Operations Inventory management > Inquiries and reports > Tracking dimensions > Item tracing

Item tracing  
400009noWHS, Backward, Site=1,Warehouse=1NON MGD,Batch number=180316-BSN0000162

Trace

Account	Name
C00002	Costco
C00003	Gordon Food

400009noWHS / 1 / 1NON MGD / 180316-BSN0000162 • 85.00 Each

- 400009noWHS • Sales order SON0000215 • 10/10/2018 • -5.00 Each • Site=1,Warehouse=1NON MGD,Location=100010
- 400009noWHS • Production PBO0000158 • 3/13/2018 • 100.00 Each • Site=1,Warehouse=1NON MGD,Location=100010
- 100010 • Production line PBO0000158 • 3/13/2018 • -100.00 Each • Site=1,Warehouse=1NON MGD,Location=100011
- 100011 • Production line PBO0000158 • 3/13/2018 • -100.00 Each • Site=1,Warehouse=1NON MGD,Location=300011
- 300011 • Production line PBO0000158 • 3/13/2018 • -800.00 oz • Site=1,Warehouse=1NON MGD,Location=300011
- 300011 • Production line PBO0000158 • 3/13/2018 • -10.00 Each • Site=1,Warehouse=1NON MGD,Location=300011

**TIE**

Account	Name	Invoice account	Customer group	Customer classification group	Telephone	Extension	Is merged
C00005	Tools R Us		10	Med			

400000 / BSN0001026 • 0.00 Each

- 400000 • Sales order SON0000056 • 10/9/2018 • -1.00 Each • Site=1,Warehouse=12,Location=BULK,Inventory status=Available,Serial number=BSN0001026
- 400000 • Production PWO0000011 • 7/27/2017 • 1.00 Each • Site=1,Warehouse=12,Location=BULK,Inventory status=Available,Serial number=BSN0001026
- 320000 • Production line PWO0000011 • 7/27/2017 • -1,000.00 Each • Site=1,Warehouse=11,Location=BULK,Inventory status=Available
- 320001 • Production line PWO0000011 • 7/27/2017 • -1,000.00 Each • Site=1,Warehouse=11,Location=BULK,Inventory status=Available
- 320002 • Production line PWO0000011 • 7/27/2017 • -1,000.00 Each • Site=1,Warehouse=11,Location=BULK,Inventory status=Available
- 320003 • Production line PWO0000011 • 7/27/2017 • -1,000.00 Each • Site=1,Warehouse=11,Location=BULK,Inventory status=Available

**PROCESS**

**DISCRETE**

00:00

77

70

**DOWN**

**TO GO**

**BALL ON**

**QTR.**

1

00

00

4

# Q4: 15<sup>th</sup> play (business issue) of the game:

I consolidate my production for a bulk intermediate, then I package the finished good. I need an easy way to do that.

# Bulk - Packaging



PROCESS



DISCRETE

**PROCESS**

Dynamics 365 | Finance and Operations | Production control > Production orders > Consolidated batch orders | USPI

Save +New Delete OPTIONS

000004 : CHEMICAL 001  
Consolidated batch orders

Bulk Orders

Formula lines Route Jobs Update Functions Inquiries Journals

Overview General Setup References Update Dimension

Production	Item number	CW unit	CW quantity	Status
✓ B-000028	CH001			Scheduled
B-000029	CH001		2	Scheduled

Packed Orders

Formula lines Route Jobs Update Functions Inquiries Journals Inventory Gantt Co-products

Overview General Setup References Update Dimension

Production	Item number	CW unit	CW quantity	Quantity	Yield	Rework batch	Co-product v...	Status
✓ B-000030	CH-10Gal-Pail			10.00	100.00	<input type="checkbox"/>	<input type="checkbox"/>	Scheduled
B-000031	CH-55Gal-Drum			50.00	100.00	<input type="checkbox"/>	<input type="checkbox"/>	Scheduled

**PROCESS**

**DISCRETE**

00:00

84

70

**DOWN**

**TO GO**

**BALL ON**

**QTR.**

1

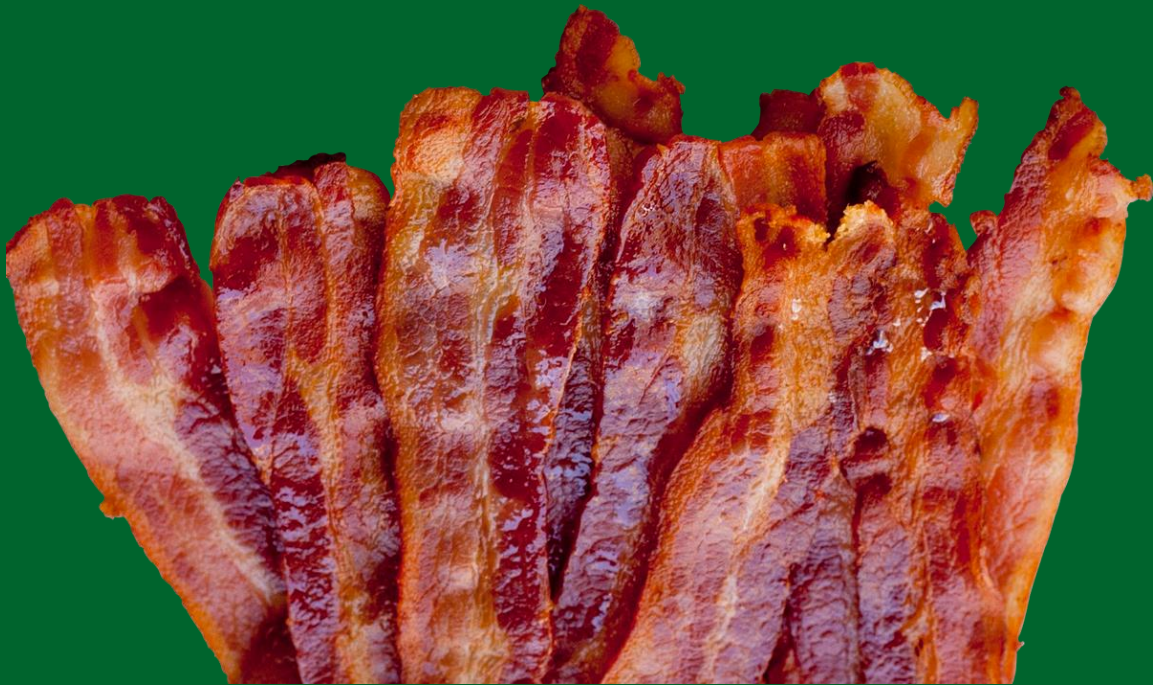
00

00

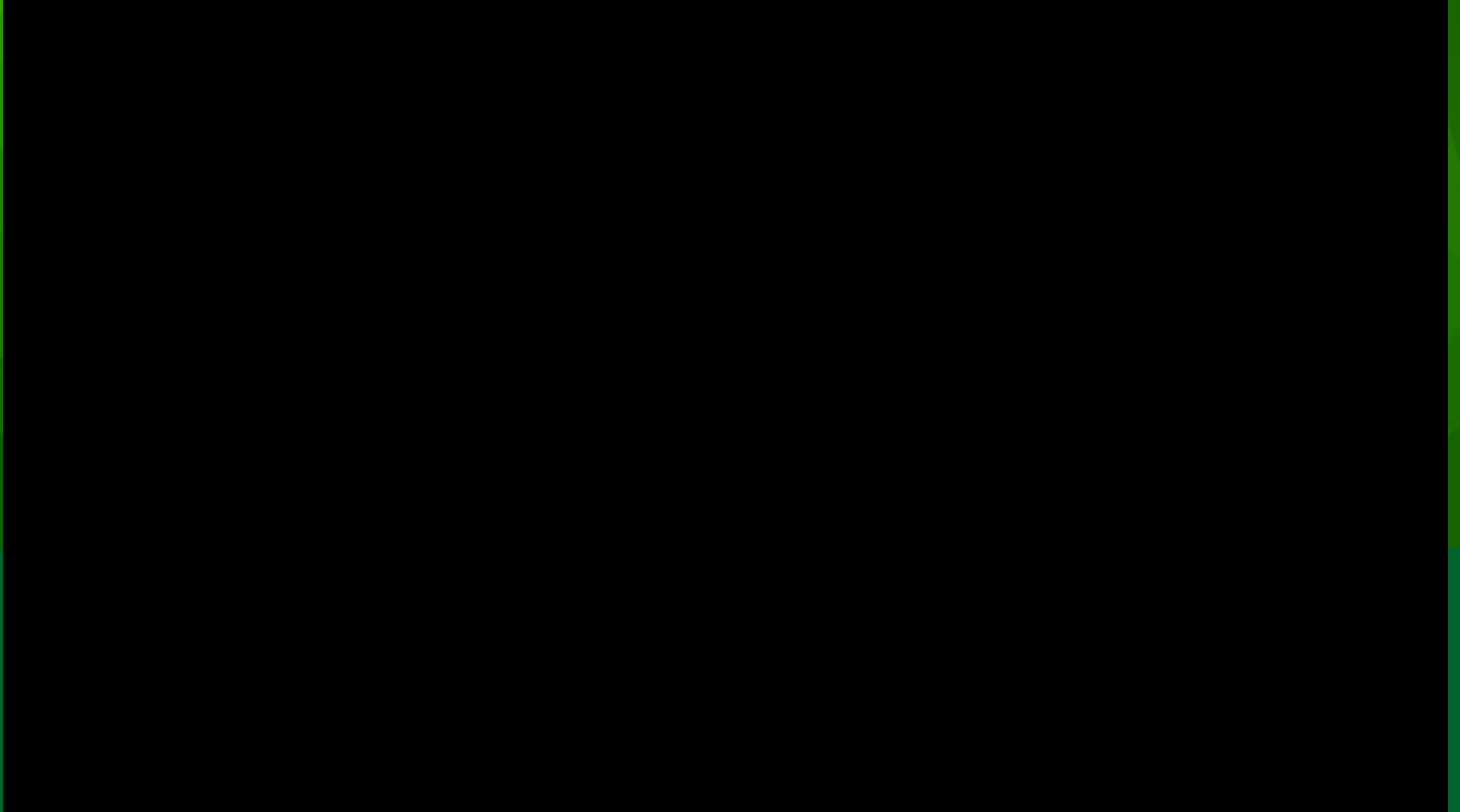
4



# We just received a new reply tweet:



# TV Timeout for Commercial: Progressive Shopping in BULK



# Q4: 16<sup>th</sup> play (business issue) of the game:

I don't have a raw material on hand, so I want the planning system to recommend a substitute material that I DO have on hand.

# Item Substitution



PROCESS

DISCRETE



**PROCESS**

Dynamics 365 Finance and Operations Product information management > Products > Released products

FORMULA VERSION FORMULAS OPTIONS

MAIN FORMULA VERSION

Co-products Activate  
Approve Calculation

Click the edit button to make changes.

FORMULA VERSIONS: 400009noWHS : CHICKENNOODLESOUP8OZ  
400009noWHS : 400009 no WHS

Formula details

QUANTITY  
CW size  
Formula size: 100.00

Total cost allocation  
No   
Use for calculation  
Yes

Formula lines

Number	Site	Warehouse	R...	Quantity	Per series	Unit	CW qua...	CW unit	Percent c...	Percent	Scalable	Plan group	Priority	Configuration group	Active quantity	It...	Product name
1		1NON MGD		800.0000	100	oz				0.00			0				Chicken Soup Non Whse Manag...
	1	1NON MGD		100.0000	100	Each				0.00			0				8 Oz Can Non Whse Managed
	1	1NON MGD		100.0000	100	Each				0.00			0				Labels Non Whse Managed
noWHS	1	1NON MGD		10.0000	100	Each				0.00		RM	1				Egg Noodles - A1 Brand
noWHS	1	1NON MGD			100	Each				0.00		RM	2				Egg Noodles - Best Brand no W...

FINAL SCORE

PROCESS

91

DOWN

1

00:00

TO GO

00

DISCRETE

70

BALL ON

00

QTR.

4







# Post Game Wrap-Up

## Process

- ✓ Manufacture more than one Item
- ✓ Variable Weights
- ✓ Inheritance
- ✓ Potency
- ✓ Consolidated Packaging
- ✓ Item Substitution

## Discrete

- ✓ Configured Items
- ✓ Just In Time Manufacturing
- ✓ Integrated with Projects

## Both

- ✓ Manufacture 1 Item
- ✓ Multi Site Production
- ✓ Batch/Lot Processing
- ✓ Engineering Changes
- ✓ Schedule Resources
- ✓ Phantom Items
- ✓ Traceability





PROCESS



DISCRETE

Head-to-Head, now you know which side you should be on !



# Post Game Wrap-Up

**Process Vs. Discrete Reference Summary Document**

**Give us your business card and we will email you the summary document and get a prize/ treat ...**



# Thank you for attending!

Please Complete a  
Survey for this  
Session: Process vs.  
Discrete Head-to-  
Head



For More Information:

Email us at:

[MSsales@Alithya.com](mailto:MSsales@Alithya.com)

Decrease Complexities,  
Deliver Results.

The Largest Independent Gathering  
of the Microsoft User Ecosystem